



Fox and Rabbit



This is part eight of a twelve-part Mystery Sampler by Fox and Rabbit Designs.

On the first day of each month the next instalment 2022 Mystery will be available to download on
Linen and Threads' website

*2022 Fox and Rabbit Mystery Sampler
Part 8 - August 2022 "Changing Seasons"*

2022 Fox and Rabbit Mystery Sampler

Part 8 – August 2022 “Changing Seasons”

Thank you for joining us for our 2022 Mystery Stitch-A-Long.

Stitch Count: 363 wide x 363 high

	Metric (7cm Framing Allowance)	Imperial (3" Framing Allowance)	Approx. Threads
46 Count Linen	55cm x 55cm	22" x 22"	11*
40 Count Linen	61cm x 61cm	25" x 25"	12*
36 Count Linen	66cm x 66cm	27" x 27"	26 or 13*
32 Count Linen	72cm x 72cm	29" x 29"	30
28 Count Linen	80cm x 80cm	32" x 32"	35
16 Count Aida	72cm x 72cm	29" x 29"	30
14 Count Aida	80cm x 80cm	32" x 32"	35

The threads estimates are provided on the following provisions

1. This is based on using a single colour of standard DMC Stranded Cotton Skein only
2. These are best guesses based on my estimated thread usage and should be used as a guide only. You might need more, or you could use less depending upon how you stitch and how much unstitching you do.
3. It is not possible for me to provide estimates for other brands of threads or if you decide to do X number of colours, how many skeins of each colour you will use.
4. If you need more or less, then I am saying sorry now. Please don't email or message me to complain.
5. If you are using an overdyed thread, then I would get more than you think you need just in case dye lots differ.

Threads: The sampler is designed in one colour, but the selection of threads used in this sampler is entirely up to you. I look forward to seeing what you decide.

If you find an error, please let me know at hello@foxandrabbit.com so I can update the chart, as if you only post on the Facebook group, I might miss it.

Don't forget to join the Facebook Group for the Mystery Sampler SAL and share your progress

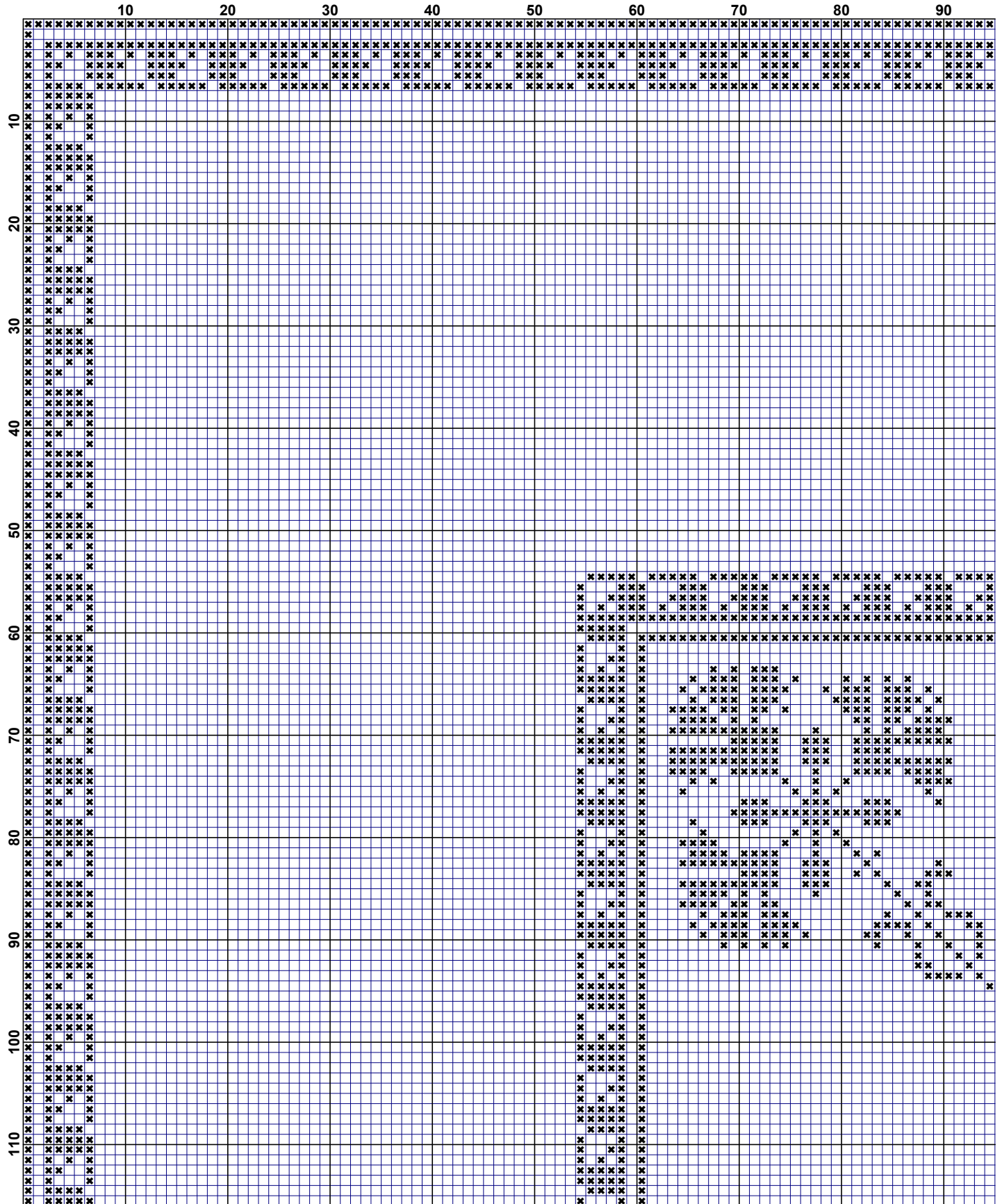
<https://www.facebook.com/groups/linenandthreadsSAL>

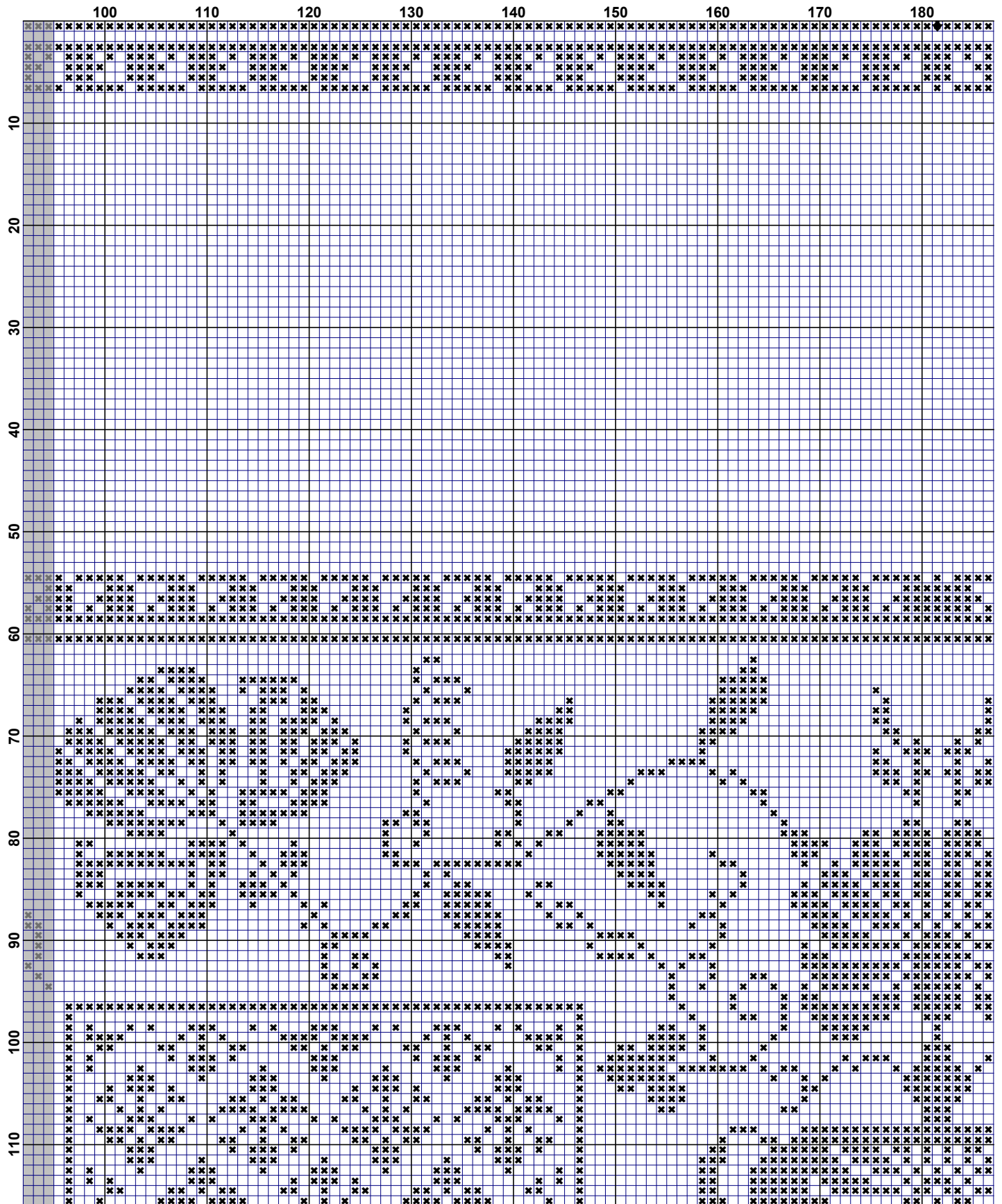
Please use the hashtag **#FoxAndRabbitMysterySamplerSAL2022**

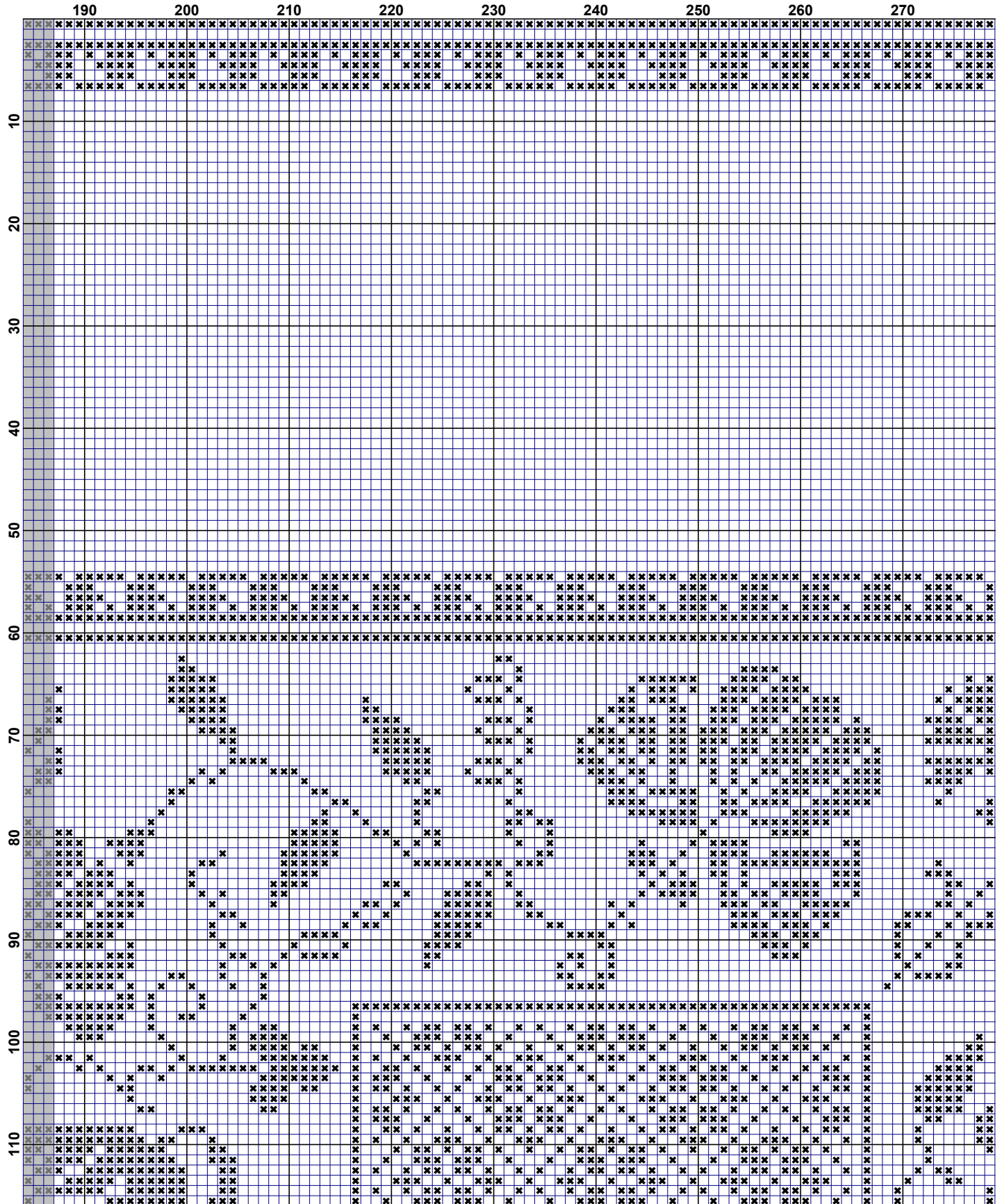
This chart is copyrighted by Fox and Rabbit Designs. You are granted a limited license to stitch this design for personal use only. Under this license you may print a working copy to stitch from. This chart is exclusive to Fox and Rabbit, and only available to download via their website shop.foxandrabbit.com



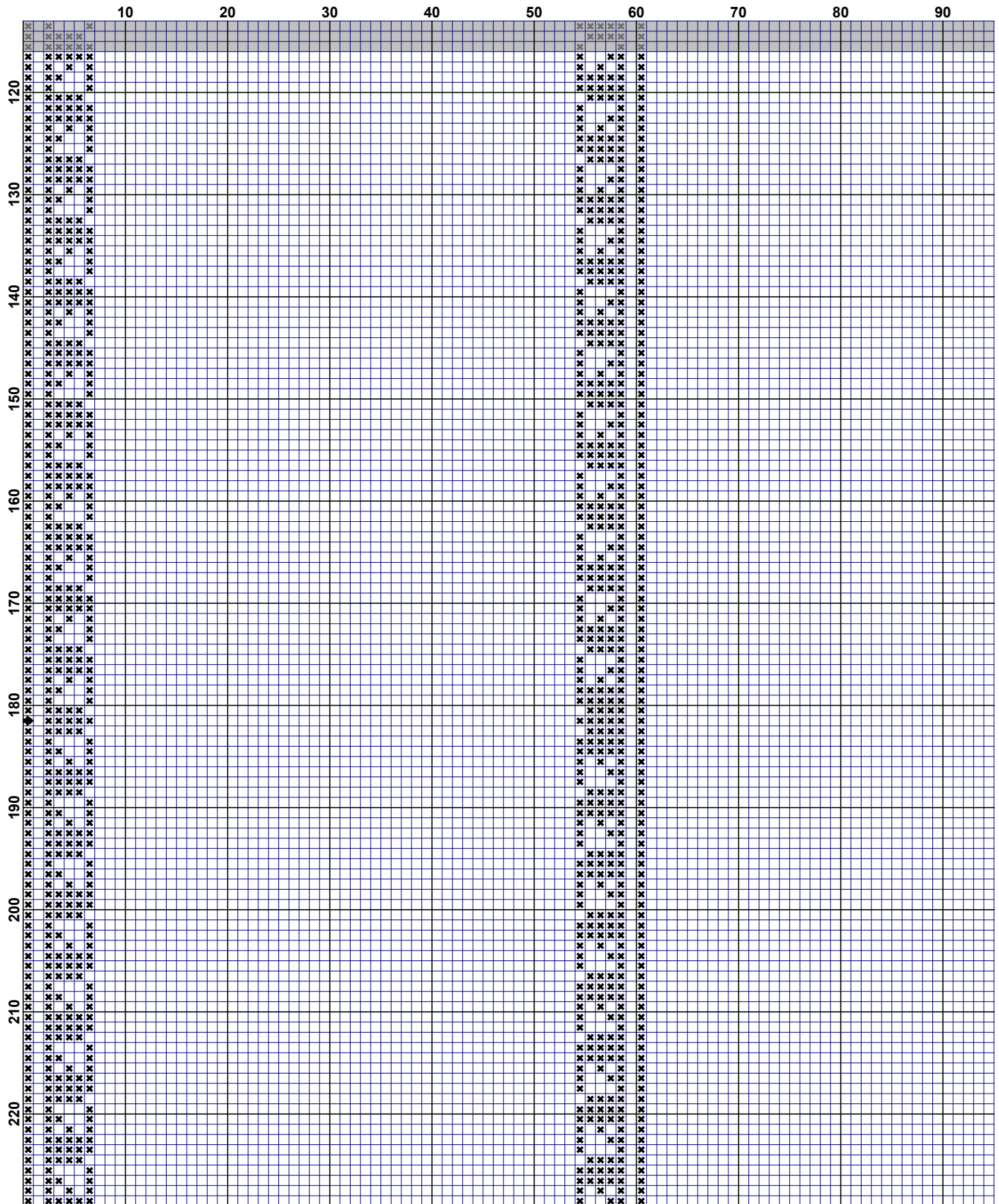
© 2022 Copyright - Fox and Rabbit Designs

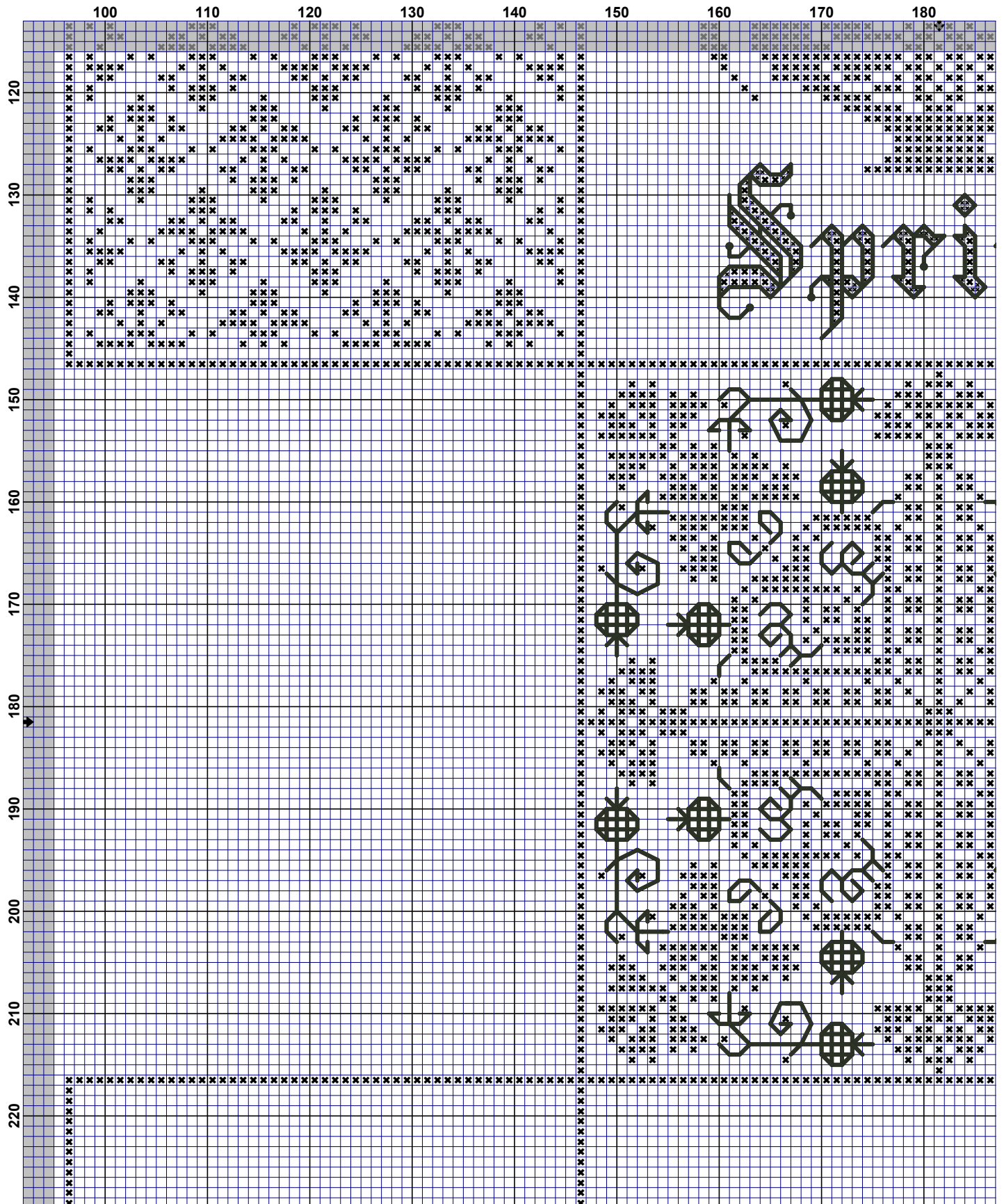


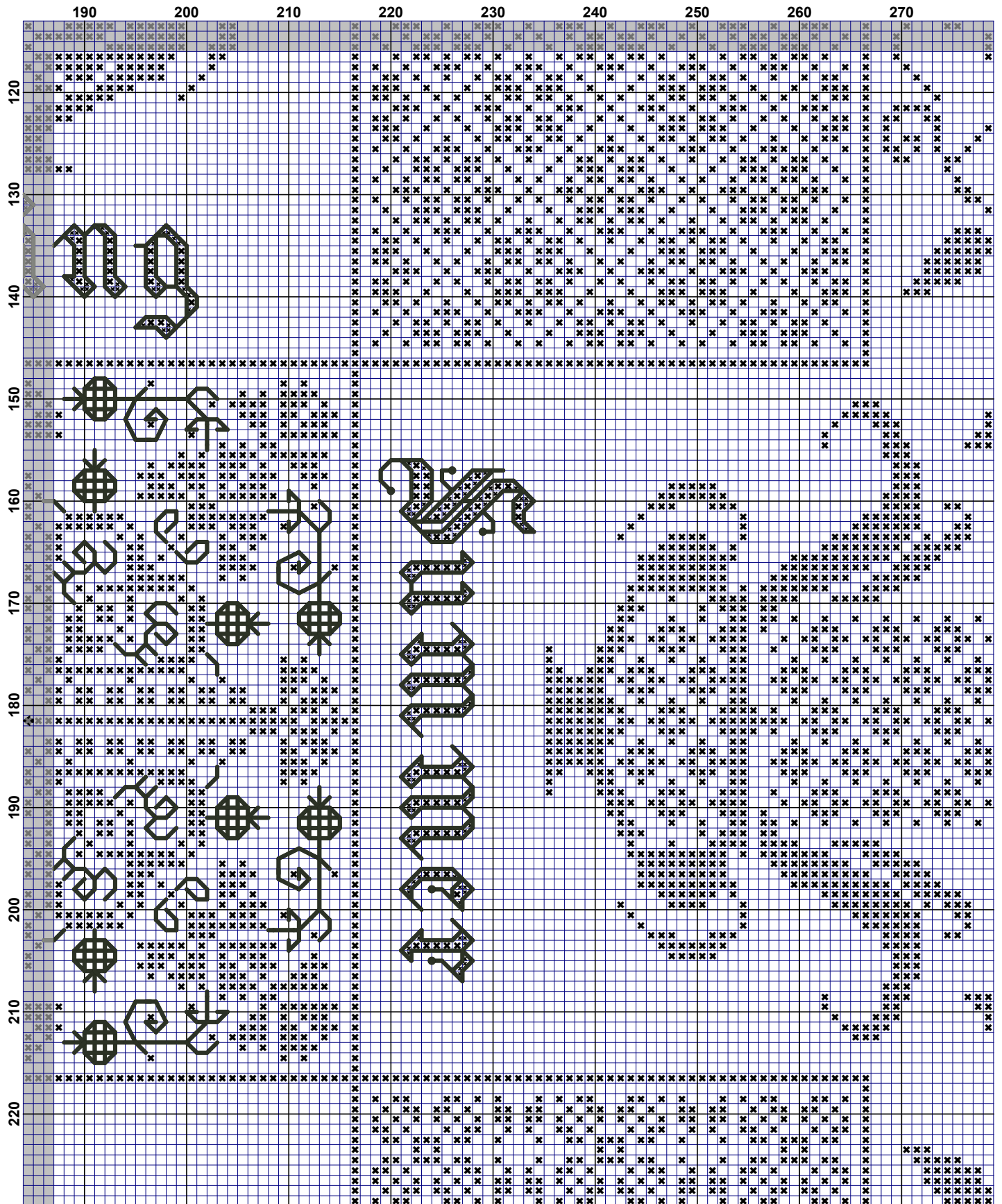




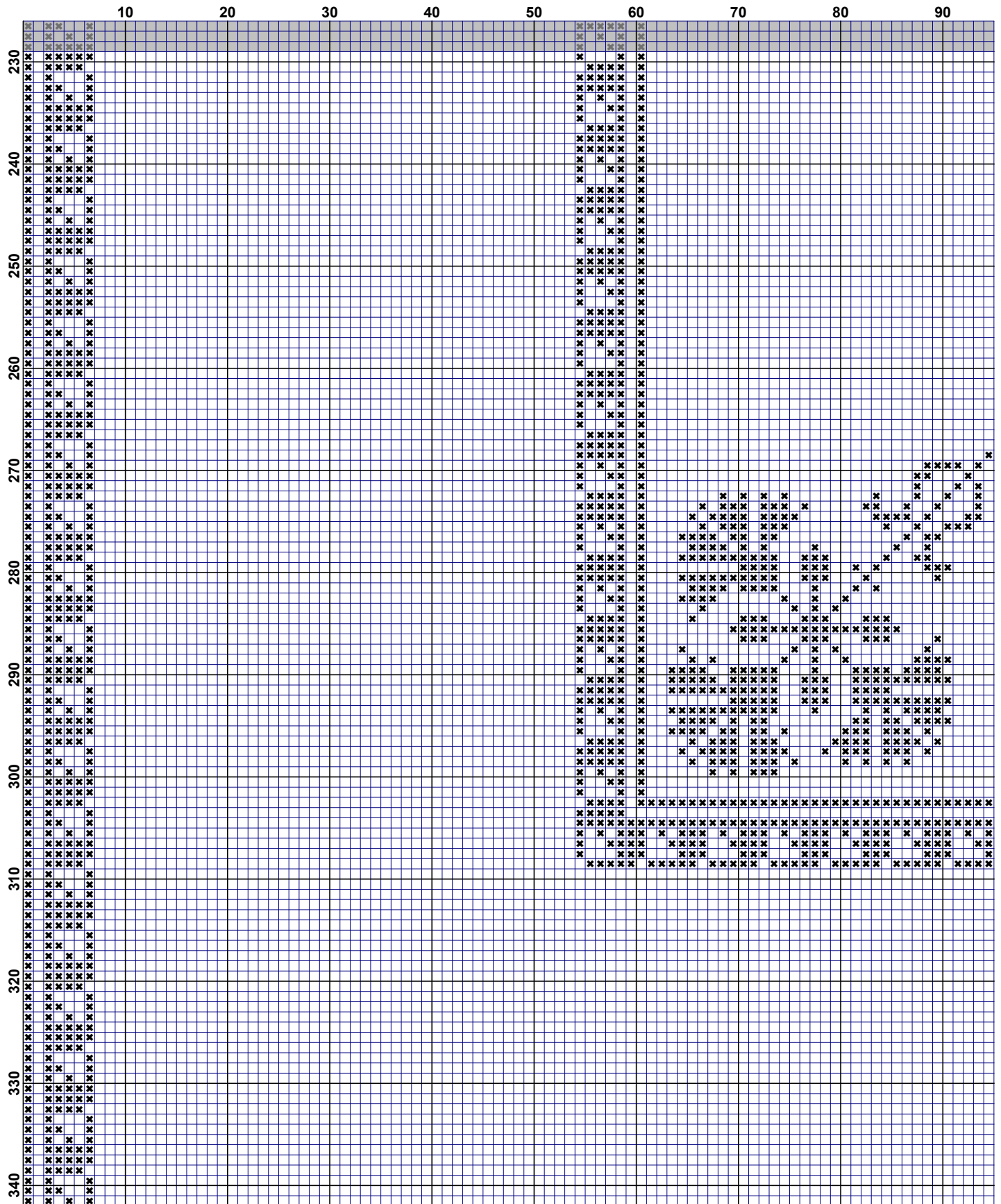
	280	290	300	310	320	330	340	350	360
10	XXXXXX	XXXXXX	XXXXXX	XXXXXX	XXXXXX	XXXXXX	XXXXXX	XXXXXX	XXXXXX
20	XXXXXX	XXXXXX	XXXXXX	XXXXXX	XXXXXX	XXXXXX	XXXXXX	XXXXXX	XXXXXX
30	XXXXXX	XXXXXX	XXXXXX	XXXXXX	XXXXXX	XXXXXX	XXXXXX	XXXXXX	XXXXXX
40	XXXXXX	XXXXXX	XXXXXX	XXXXXX	XXXXXX	XXXXXX	XXXXXX	XXXXXX	XXXXXX
50	XXXXXX	XXXXXX	XXXXXX	XXXXXX	XXXXXX	XXXXXX	XXXXXX	XXXXXX	XXXXXX
60	XXXXXX	XXXXXX	XXXXXX	XXXXXX	XXXXXX	XXXXXX	XXXXXX	XXXXXX	XXXXXX
70	XXXXXX	XXXXXX	XXXXXX	XXXXXX	XXXXXX	XXXXXX	XXXXXX	XXXXXX	XXXXXX
80	XXXXXX	XXXXXX	XXXXXX	XXXXXX	XXXXXX	XXXXXX	XXXXXX	XXXXXX	XXXXXX
90	XXXXXX	XXXXXX	XXXXXX	XXXXXX	XXXXXX	XXXXXX	XXXXXX	XXXXXX	XXXXXX
100	XXXXXX	XXXXXX	XXXXXX	XXXXXX	XXXXXX	XXXXXX	XXXXXX	XXXXXX	XXXXXX
110	XXXXXX	XXXXXX	XXXXXX	XXXXXX	XXXXXX	XXXXXX	XXXXXX	XXXXXX	XXXXXX

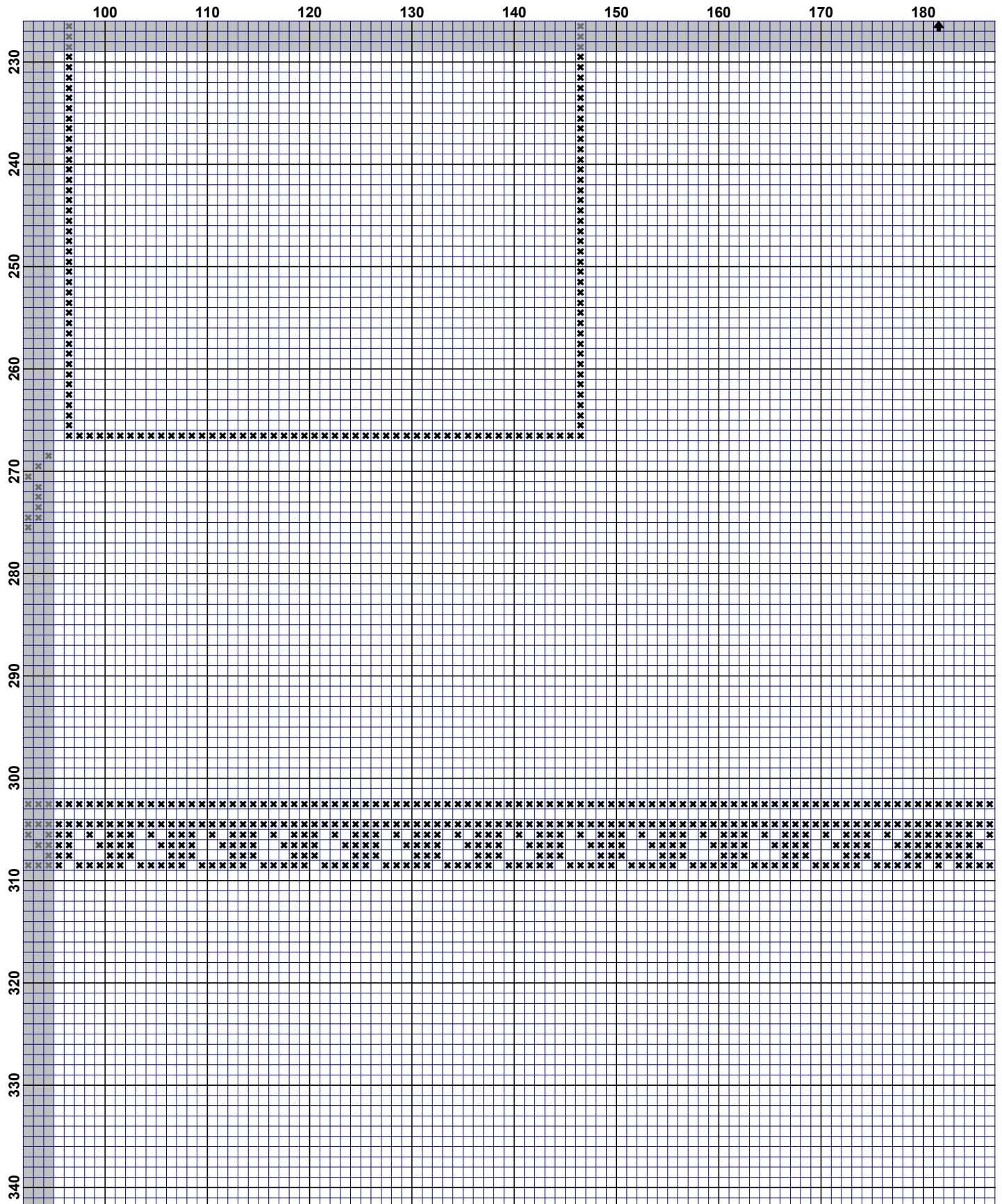


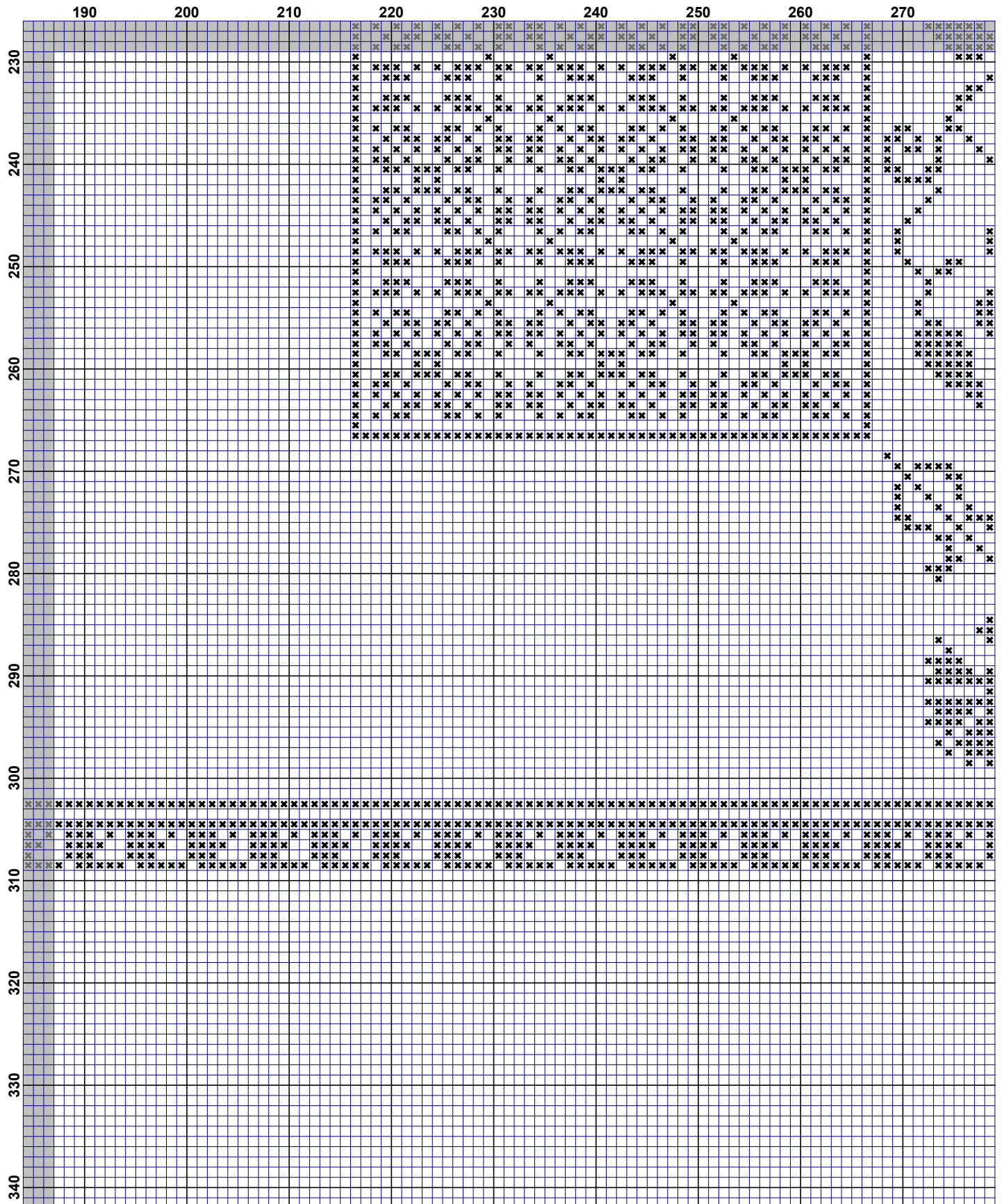




	280	290	300	310	320	330	340	350	360
120	X	X	X	X	X	X	X	X	X
130	X	X	X	X	X	X	X	X	X
140	X	X	X	X	X	X	X	X	X
150	X	X	X	X	X	X	X	X	X
160	X	X	X	X	X	X	X	X	X
170	X	X	X	X	X	X	X	X	X
180	X	X	X	X	X	X	X	X	X
190	X	X	X	X	X	X	X	X	X
200	X	X	X	X	X	X	X	X	X
210	X	X	X	X	X	X	X	X	X
220	X	X	X	X	X	X	X	X	X







	280	290	300	310	320	330	340	350	360
230	X	X	X	X	X	X	X	X	X
231	X	X	X	X	X	X	X	X	X
232	X	X	X	X	X	X	X	X	X
233	X	X	X	X	X	X	X	X	X
234	X	X	X	X	X	X	X	X	X
235	X	X	X	X	X	X	X	X	X
236	X	X	X	X	X	X	X	X	X
237	X	X	X	X	X	X	X	X	X
238	X	X	X	X	X	X	X	X	X
239	X	X	X	X	X	X	X	X	X
240	X	X	X	X	X	X	X	X	X
241	X	X	X	X	X	X	X	X	X
242	X	X	X	X	X	X	X	X	X
243	X	X	X	X	X	X	X	X	X
244	X	X	X	X	X	X	X	X	X
245	X	X	X	X	X	X	X	X	X
246	X	X	X	X	X	X	X	X	X
247	X	X	X	X	X	X	X	X	X
248	X	X	X	X	X	X	X	X	X
249	X	X	X	X	X	X	X	X	X
250	X	X	X	X	X	X	X	X	X
251	X	X	X	X	X	X	X	X	X
252	X	X	X	X	X	X	X	X	X
253	X	X	X	X	X	X	X	X	X
254	X	X	X	X	X	X	X	X	X
255	X	X	X	X	X	X	X	X	X
256	X	X	X	X	X	X	X	X	X
257	X	X	X	X	X	X	X	X	X
258	X	X	X	X	X	X	X	X	X
259	X	X	X	X	X	X	X	X	X
260	X	X	X	X	X	X	X	X	X
261	X	X	X	X	X	X	X	X	X
262	X	X	X	X	X	X	X	X	X
263	X	X	X	X	X	X	X	X	X
264	X	X	X	X	X	X	X	X	X
265	X	X	X	X	X	X	X	X	X
266	X	X	X	X	X	X	X	X	X
267	X	X	X	X	X	X	X	X	X
268	X	X	X	X	X	X	X	X	X
269	X	X	X	X	X	X	X	X	X
270	X	X	X	X	X	X	X	X	X
271	X	X	X	X	X	X	X	X	X
272	X	X	X	X	X	X	X	X	X
273	X	X	X	X	X	X	X	X	X
274	X	X	X	X	X	X	X	X	X
275	X	X	X	X	X	X	X	X	X
276	X	X	X	X	X	X	X	X	X
277	X	X	X	X	X	X	X	X	X
278	X	X	X	X	X	X	X	X	X
279	X	X	X	X	X	X	X	X	X
280	X	X	X	X	X	X	X	X	X
281	X	X	X	X	X	X	X	X	X
282	X	X	X	X	X	X	X	X	X
283	X	X	X	X	X	X	X	X	X
284	X	X	X	X	X	X	X	X	X
285	X	X	X	X	X	X	X	X	X
286	X	X	X	X	X	X	X	X	X
287	X	X	X	X	X	X	X	X	X
288	X	X	X	X	X	X	X	X	X
289	X	X	X	X	X	X	X	X	X
290	X	X	X	X	X	X	X	X	X
291	X	X	X	X	X	X	X	X	X
292	X	X	X	X	X	X	X	X	X
293	X	X	X	X	X	X	X	X	X
294	X	X	X	X	X	X	X	X	X
295	X	X	X	X	X	X	X	X	X
296	X	X	X	X	X	X	X	X	X
297	X	X	X	X	X	X	X	X	X
298	X	X	X	X	X	X	X	X	X
299	X	X	X	X	X	X	X	X	X
300	X	X	X	X	X	X	X	X	X
301	X	X	X	X	X	X	X	X	X
302	X	X	X	X	X	X	X	X	X
303	X	X	X	X	X	X	X	X	X
304	X	X	X	X	X	X	X	X	X
305	X	X	X	X	X	X	X	X	X
306	X	X	X	X	X	X	X	X	X
307	X	X	X	X	X	X	X	X	X
308	X	X	X	X	X	X	X	X	X
309	X	X	X	X	X	X	X	X	X
310	X	X	X	X	X	X	X	X	X
311	X	X	X	X	X	X	X	X	X
312	X	X	X	X	X	X	X	X	X
313	X	X	X	X	X	X	X	X	X
314	X	X	X	X	X	X	X	X	X
315	X	X	X	X	X	X	X	X	X
316	X	X	X	X	X	X	X	X	X
317	X	X	X	X	X	X	X	X	X
318	X	X	X	X	X	X	X	X	X
319	X	X	X	X	X	X	X	X	X
320	X	X	X	X	X	X	X	X	X
321	X	X	X	X	X	X	X	X	X
322	X	X	X	X	X	X	X	X	X
323	X	X	X	X	X	X	X	X	X
324	X	X	X	X	X	X	X	X	X
325	X	X	X	X	X	X	X	X	X
326	X	X	X	X	X	X	X	X	X
327	X	X	X	X	X	X	X	X	X
328	X	X	X	X	X	X	X	X	X
329	X	X	X	X	X	X	X	X	X
330	X	X	X	X	X	X	X	X	X
331	X	X	X	X	X	X	X	X	X
332	X	X	X	X	X	X	X	X	X
333	X	X	X	X	X	X	X	X	X
334	X	X	X	X	X	X	X	X	X
335	X	X	X	X	X	X	X	X	X
336	X	X	X	X	X	X	X	X	X
337	X	X	X	X	X	X	X	X	X
338	X	X	X	X	X	X	X	X	X
339	X	X	X	X	X	X	X	X	X
340	X	X	X	X	X	X	X	X	X

